

# Welcome Back!

Q: Why use SAM Learning this year?

A: It benefits your learners - and saves you time!

1. Find Gaps and Fill Gaps.
2. Reduce your workload.
3. Be confident in a proven system.
4. Get all the support and training you need.



# What's new...?

In the last year we...

1. Helped you through **Lockdown** with unbroken service and swift support.
2. Added **Question Level Analysis Reports**.
3. Improved the **task setting interface**.
4. Identified **New** and **Key Content** for you.
5. Added **more resources** every month, including: Diagnostics and GCSE Exam Essentials for core.
6. Launched the **CPD Centre** and improved the **Message Board**.
7. Linked to your **Homework Setting** software.

Virtual Schooling



**SAM** Learning



Student Name	Screen 1 (75%)	Screen 2 (71%)	Screen 3 (50%)	Completion Date	Activity Score
Elena Talpa	0	67	0	DEC 22	50
Constantin Pogorelov	100	83	100	DEC 17	88
David Brown	100	100	100	DEC 22	100
Eugene Dementev	100	33	0	DEC 22	38

Select Activities

GCSE English Language All English Language Topic

Keyword search... Show Activities for... Activity Type Favourites

Found 242 activities

Activity	Exam Board	Previously Set to
<input type="checkbox"/> Creating Atmosphere	AQA Edexcel OCR Eqaon WJEC KCSF Cambridge	⚙️ 📄 ⭐
<input type="checkbox"/> Introduction to Creative Writing	AQA Edexcel OCR Eqaon WJEC KCSF Cambridge	⚙️ 📄 ⭐
<input type="checkbox"/> Creative Writing	AQA Edexcel OCR Eqaon WJEC KCSF Cambridge	⚙️ 📄 ⭐
<input type="checkbox"/> Different Types of Literature	AQA Edexcel OCR Eqaon WJEC	⚙️ 📄 ⭐



# What's coming...?

## Message Board



### Task, Progress and Usage

Explore our [reports](#): tasks, progress, usage - and Question Level Analysis.



### Set a Task

Set a [task](#) to your learners.



### Subject Content

Explore [content](#) available in your subject.



### CPD Centre

Have a look at the brief 'How To' videos in the [CPD Centre](#).

Right now we are working on...

1. Converting activities to run better on **small-screen devices**.
2. Simplifying that initial Teacher 'learning overhead' to help you to **get started even quicker**.
3. Focussed Support on the problems that affect Schools, such as:
  - a. **Year 7** Baselining and Intervention
  - b. **Subject-Level** Support

...and lots of other exciting developments that we'll announce when they're on their way!

**SAM Learning** | ...for Year 7  
Support Transition and Consolidate Foundations

### Find and Fill Gaps

Start with **Diagnostic Activities Set A** - for English, Maths and Science.  
Later on, use Sets B and C to review progress and identify next steps.

**Question Level Analysis** reports will show you where gaps are... so that you can target your catch-up teaching.

Create your own **Groups** - to set and review the work of targeted learners.  
Or identify individuals to work with frequently.

Use our **Catch-up Literacy and Numeracy** activities to target gaps left from KS3 - or focus in on GCSE grades 1-4.

### Start Well and Monitor Progress

Diagnostic Activities are great for baselining - find out where your Year 7 are starting from in Core Subjects.

Establish good habits early. Regular online homework and revision builds skills for future years.

Motivate your pupils to gain points to dress their avatar and encourage them to compete against buddies on the leaderboard.

Review how well your '17s are doing, looking at our **progress reports**.

Watch a video about Year 7 Literacy and Numeracy in our CPD Centre. Email our **School Success Team** for strategic Support.

Book us in to your team meeting for training or a Q&A.

# 3 points for Teachers

1. SAM Learning has thousands of activities - **the system will mark them**, email the scores - and identify gaps!
2. You can **set up your own Classroom Differentiation Groups** - to target underperforming learners.
3. You can **personalise** many of our activities... or even build your own.

Student Name	Screen 1 (75%)	Screen 2 (71%)	Screen 3 (50%)	Completion Date	Activity Score
Elena Talpa	0	67	0	DEC 22	50
Constantin Pogorelov	100	83	100	DEC 17	88
David Brown	100	100	100	DEC 22	100
Eugene Dermentev	100	33	0	DEC 22	38

Task Hours: 920 Active Learners: 32 of 32 (100%) Average Score on Review: 84%

Task Hours per Student: 28.45 Task Hours Outside School: 51% Set Task Hours: 57%

Red (< 60%) Amber (≥ 60%) Green (≥ 80%)

Student	Subject	Year	🕒	🏠	👤	📊	RAG	M/F
Allaway, Josephine	All	Year 11	21:15	42%	55%	79%	🟡	F
Allen, Carole, Jamie	All	Year 11	33:15	21%	46%	88%	🟢	M
Bicknell, Wiktoria	All	Year 11	15:20	38%	92%	81%	🟢	F
Bishop, Katy Jo	All	Year 11	26:00	16%	54%	69%	🟢	M
Brazzo, Laura	All	Year 11	15:55	18%	88%	80%	🟢	F
Burton, Martin	All	Year 11	31:10	69%	62%	84%	🟢	F

SAM Learning Adam Bertham  
100 Learning, Business Accounts Support Connect Log out

Home Set Task Groups Reports Activity Roster Learners CPD Centre Profile

Class: 10B/Cs1 Confirm

Teachers

Gerena Cuddebon  
Adam Bertham  
Victoria Pitt

Classroom Differentiation Groups

Learner Characteristics: All

First Name + Last Name + Tues P1

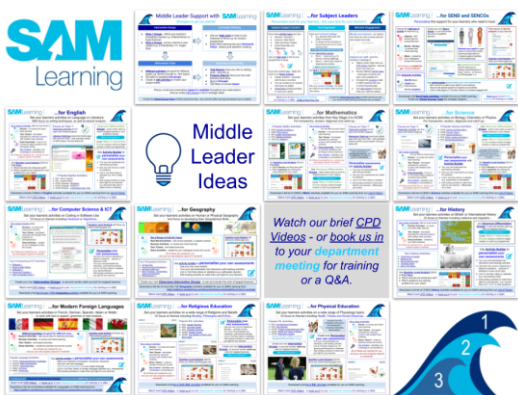
Clipboard Amor

Name Address

Create New Group



# 3 points for Middle Leaders



Think Intent, Implementation, Impact:

1. You can plan SAM Learning activities into your **schemes of work**.
2. You can include SAM Learning in your **homework and intervention policies** (Wave 1 and 2 Groups).
3. You can **monitor and review** learner performance - by task, progress or usage.

**SAM Learning** | ...for SEND and SENCOs  
Personalise the support for your learners who need it most

Choose the **right type of activity** for learners e.g.:

- 1. **Improve** - with sound clips for comprehension
- 2. **Revise / Revise+** - to review and check learning
- 3. **Share** - created by your colleagues across the country

All of these are **marked for you** - instant feedback!

**New Diagnostic Activities**

- 1. **Identify Gaps** - Target your interventions. Monitor progress.
- 2. **Use activity builder** to personalise your own assessments
  - Edit content to make it just right for your learners
  - Record and upload speech to improve accessibility
  - Link to web pages or YouTube Videos to increase engagement

Create your own **Wave 2 Groups** - to set and review the work of targeted learners.

Filter reports to see the **progress** of your learners:

Filter: Year Group, Year Group, Y9-7

Filter: Special educational needs: Yes

**Question Level Analysis** will show you where gaps are:

Motivate your pupils to gain points to dress their avatar and encourage them to compete against buddies on the leaderboard.

Set targeted intervention work to catch up on Literacy and Numeracy in Years 7 and 8... or focus in on GCSE grades 1-4.

Download a full **list of topic activities** available for you on SAM Learning. Email our **School Success Team** for strategic Support.

*Book us in to your team meeting for training or a Q&A.*

**Contact your School Success Manager to book us into a Team Meeting.**

### Subject Leaders

- ❑ Check that you know which **activities** we have that match up with your planned teaching order. (The [List of Topics](#) link is on the Home page.)
- ❑ Identify your subject area's **Champion** – to blaze the trail for you and share good practice with other areas (this could become an Appraisal Target).
- ❑ Clarify expectations of staff e.g.:
  - ❑ Frequency of **task setting**
  - ❑ Use of **Classroom Differentiation Groups** (Wave 1) – for underachievers in a class.
- ❑ Create your own **cohort-level intervention groups** for monitoring purposes (Wave 1/2).
- ❑ Delete or update your **old intervention groups** (Wave 2).
- ❑ Book a **Departmental Training Session** with your **School Success Manager**.

### Teachers

- ❑ On your profile page, check that **your classes are identified** in your preferences – so they come up first when you set work (Wave 1).
- ❑ Tell your new classes **how to log in** – and set them an **introductory task** to see that they can (e.g. a prior knowledge review before launching in to this year's work).
- ❑ Create your own initial **class-level differentiation groups** for monitoring/intervention purposes (Groups Tab - Wave 1).
- ❑ Delete your **old class-level differentiation groups**.

### SENDCOs

- ❑ Create an **intervention group** in each academic year – so that you can monitor their work / set them targeted intervention work (Groups Tab - Wave 2).
- ❑ Delete or update **last year's intervention groups**.
- ❑ Use Diagnostic Activities to identify underperforming Y7s and plan **targeted intervention for Literacy and Numeracy**. (Have a look at our [List of Topics](#), linked from the Home page.)
- ❑ Identify any **individual learners** who might miss large amounts of school and benefit from having work set online (Groups Tab - Wave 3).

### What is Three-Wave Intervention?



# Get started quickly

1. New staff - if you haven't received a **registration email**, speak to your school's SAM Learning Coordinator.
2. Existing Staff - refer to the **September Checklists** (your SAMCo has a copy, or find it online).
3. For help, use our **CPD Centre** and **support** pages.